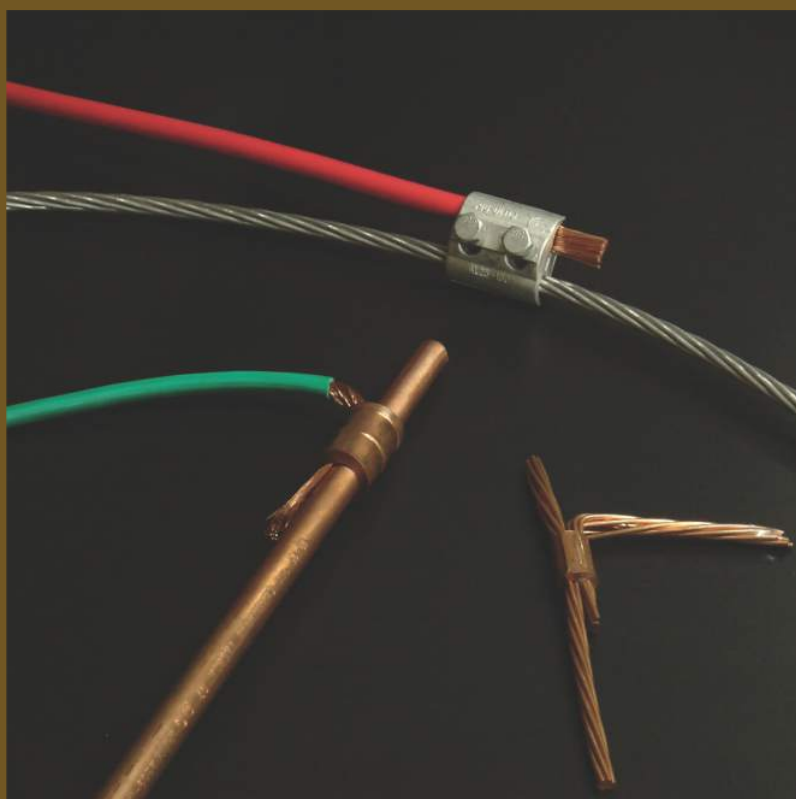




Morsetería

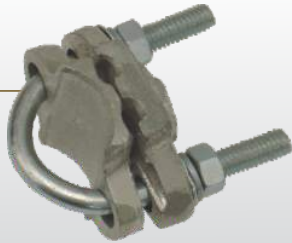
Cable Clamps

GPT	35
GFP 1	35
GFP 2	35
GFP 3	36
GFP 4	36
GFP 5	36
GBB	37
CBP	37
CBPB	37
GPB	38
GB	38
CBDN / CADN	38
TBM / TAM	39
TBM / TAM 45°	39
TBM / TAM 90°	39
BL	40
PDT	40



TINNED BRASS GROUNDING CLAMP, FIXATION TO PIPE OR JAVELIN, ONE OR TWO CONDUCTORS

GPT



FOR PIPE	SECTION mm ²	THREAD	CODE
1"	16 A 50	5/16"	GPT-1
1" 1/4	16 A 70	5/16"	GPT-2

Grounding clamp of tinned bronze. Fixed by U coiled rod leaving the conductor parallel to the pipe or javelin. It is possible to downstream one or two conductors.

TINNED BRASS GROUNDING CLAMP, FLAT FIXING, ONE PLATE – ONE CONDUCTOR

GFP 1



SECTION mm ²	BOLT	CODE
10 a 35	3/8" x 1 1/2"	GFP1-01
10 a 35	1/2" x 1 1/2"	GFP1-01B
50 a 95	3/8" x 1 1/2"	GFP1-02
50 a 95	1/2" x 1 1/2"	GFP1-02B
120 a 185	3/8" x 1 3/4"	GFP1-03
120 a 185	1/2" x 1 3/4"	GFP1-03B

Tinned bronze clamp for conductor. Generally used for grounding by fixing the conductor to a one plate structure to generate direct contact to the ground.

TINNED BRASS GROUNDING CLAMP, FLAT FIXING, TWO PLATES – ONE CONDUCTOR

GFP 2



SECTION mm ²	BOLT	CODE
10 a 35	3/8" x 1 3/4"	GFP2-01
10 a 35	1/2" x 1 3/4"	GFP2-01B
50 a 95	3/8" x 1 3/4"	GFP2-02
50 a 95	1/2" x 1 3/4"	GFP2-02B
120 a 185	3/8" x 2"	GFP2-03
120 a 185	1/2" x 2"	GFP2-03B

Tinned bronze clamp for conductor. Generally used for grounding by fixing the conductor to a two plate structure direct contact to the ground. It is also possible to space the cable of the device to be protected.

TINNED BRASS GROUNDING CLAMP, FLAT FIXING, ONE PLATE – TWO CONDUCTORS

GFP 3



SECTION mm ²	BOLT	CÓDIGO
6 a 50	3/8" x 1 1/2"	GFP3-01
6 a 50	1/2" x 1 1/2"	GFP3-01B
50 a 70	3/8" x 1 1/2"	GFP3-02
50 a 70	1/2" x 1 1/2"	GFP3-02B
70 a 120	3/8" x 1 3/4"	GFP3-03
70 a 120	1/2" x 1 3/4"	GFP3-03B
120 a 185	3/8" x 2"	GFP3-04
120 a 185	1/2" x 2"	GFP3-04B

Tinned bronze clamp for two conductors. Generally used for grounding by fixing the conductor to a one plate structure to generate direct contact to the ground.

TINNED BRASS GROUNDING CLAMP, FLAT FIXING, TWO PLATES – TWO CONDUCTORS

GFP 4

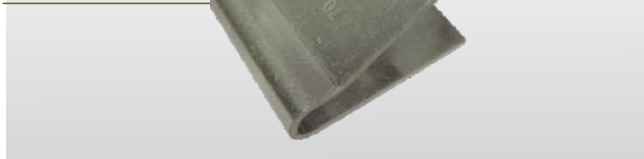


SECTION mm ²	BOLT	CODE
6 a 50	3/8" x 1 1/2"	GFP4-01
6 a 50	1/2" x 1 1/2"	GFP4-01B
50 a 70	3/8" x 1 3/4"	GFP4-02
50 a 70	1/2" x 1 3/4"	GFP4-02B
70 a 120	3/8" x 1 3/4"	GFP4-03
70 a 120	1/2" x 1 3/4"	GFP4-03B
120 a 185	3/8" x 2"	GFP4-04
120 a 185	1/2" x 2"	GFP4-04B

Tinned bronze clamp for two conductors. Generally used for grounding by fixing the conductor to a two plate structure to generate direct contact to the ground. It is also possible to space the cable of the device to be protected.

TINNED COPPER GROUNDING CLAMP, FIXING TO STRUCTURE, ONE CONDUCTOR

GFP 5

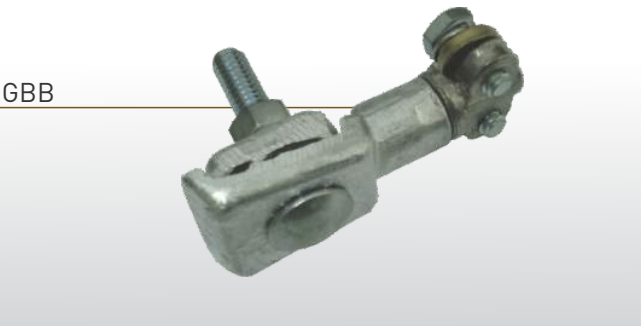


SECTION mm ²	WIDTH	LENGHT	BOLT	CODE
25 a 50	38,2	48	11	GFP5-01
70 a 120	38,2	48	11	GFP5-02
25 a 50	38,2	48	13	GFP5-03
70 a 120	38,2	48	13	GFP5-04

Tinned bronze clamp for conductor. Generally used for grounding by fixing the conductor to a structure and directing the cable to wherever it is necessary.

BIMETALLIC DOWNSTREAM CLAMP

GBB

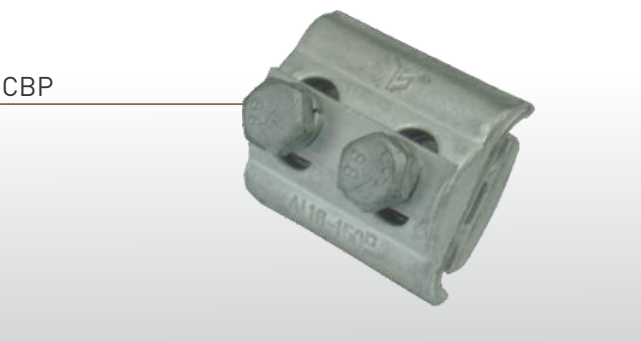


SECTION mm ² Al	SECTION mm ² Cu	CODE
10 a 70	2,5 a 10	GBB-1
10 a 185	4 a 10	GBB-2

Bimetallic Downstream Clamp for perpendicular derivations between an aluminum line and a copper derivation.

BIFILAR PARALLEL ALUMINUM CONNECTOR

CBP

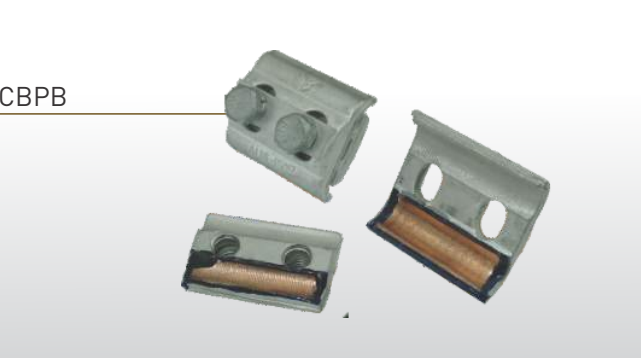


SECTION mm ²	BOLT QUANTITY	CODE
6 a 50	1	CBP-0
6 a 50	2	CBP-1
10 a 95	2	CBP-2
25 a 185	2	CBP-3

Bifilar Parallel Aluminum Connector. Used for derivations from an aluminum pass through cable to another one of the same material. Provided with one or two bolts according to the model required.

BIMETALLIC PARALLEL BIFILAR CONNECTOR

CBPB



SECTION mm ²	BOLT QUANTITY	CODE
6 a 50	1	CBPB-0
6 a 50	2	CBPB-1
10 a 95	2	CBPB-2
25 a 185	2	CBPB-3

Bimetallic Parallel Bifilar Connector. Used for derivations from an aluminum pass through cable to another of copper. With a copper plate embedded and glued to both opposite sides, avoiding galvanic couple (corrosion). Provided with one or two bolts according to the model required.

TINNED BRASS COMBED CLAMP

GPB



SECTION mm ²	BOLT QUANTITY	BOLT	CODE
6 a 35	1	1/4" x 1"	GPB-1
16 a 50	2	1/4" x 1 1/4"	GPB-2
25 a 70	2	5/16" x 1 1/2"	GPB-3
70 a 120	2	5/16" x 1 1/2"	GPB-4

Tinned Brass Parallel Clamp, forging manufactured, ensuring higher mechanical endurance and a more homogeneous finish. Its dented design prevents conductors from sliding. Used for derivations or connections among copper cables. Tinned Brass Parallel Clamp, forging manufactured, ensuring higher mechanical endurance and a more homogeneous finish. Its dented design prevents conductors from sliding. Used for derivations or connections among copper cables.

TINNED BRASS PARALLEL CLAMP

GB



SECTION mm ²	CANTIDAD DE BULONES	BULÓN	CODE
6 a 50	1	5/16" x 1 1/2"	GB-1
6 a 50	2	5/16" x 1 1/2"	GB-2
10 a 95	2	5/16" x 1 1/4"	GB-3
16 a 185	2	3/8" x 2"	GB-4

Tinned Brass Parallel Bifilar Clamp. Used for derivations or connections among copper cables. Square neck screws are provided making possible the use of only one adjustable wrench.

BRASS OR TINNED ALUMINUM CONNECTOR FOR 90° DERIVATION

CBDN / CADN



SECTION mm ²	BOLT	MATERIAL	CODE
6 a 50	1/4" x 1"	Brass	CBDN-1
35 a 70	1/4" x 1 1/4"	Brass	CBDN-2
6 a 50	1/4" x 1"	Aluminum	CADN-1
35 a 70	1/4" x 1 1/4"	Aluminum	CADN-2

Brass or Tinned Aluminum Connector. Used for connections of 90° derivation, of two copper or aluminum conductors, depending on the model, of the same or different section.

TINNED BRASS OR ALUMINUM TERMINAL WITH CLAMPING CABLE GLAND - STRAIGHT

TBM / TAM



Note: Not recommended to be subjected to vibrations or high levels of traction.

SECTION mm ²	BOLT	MATERIAL	CODE
16 a 50	1/4" x 1"	Brass	TBM-1
70 a 120	1/4" x 1 1/4"	Brass	TBM-2
120 a 240	5/16" x 1 1/2"	Brass	TBM-3
300 a 400	5/16" x 1 1/2"	Brass	TBM-4
16 a 50	1/4" x 1"	Aluminum	TAM-1
70 a 120	1/4" x 1 1/4"	Aluminum	TAM-2
120 a 240	5/16" x 1 1/2"	Aluminum	TAM-3
300 a 400	5/16" x 1 1/2"	Aluminum	TAM-4

Tinned Brass or Aluminum Terminal with Clamping Cable Gland, straight, of one hole, for copper or aluminum conductors according to model. It is possible to connect several cable sections with only one terminal.

BRASS OR ALUMINUM TERMINAL WITH CLAMPING CABLE GLAND - 45°

TBM / TAM 45°



Note: Not recommended to be subjected to vibrations or high levels of traction.

SECTION mm ²	BOLT	MATERIAL	CODE
16 a 50	1/4" x 1"	Brass	TBM-1 45°
70 a 120	1/4" x 1 1/4"	Brass	TBM-2 45°
120 a 240	5/16" x 1 1/2"	Brass	TBM-3 45°
300 a 400	5/16" x 1 1/2"	Brass	TBM-4 45°
16 a 50	1/4" x 1"	Aluminum	TAM-1 45°
70 a 120	1/4" x 1 1/4"	Aluminum	TAM-2 45°
120 a 240	5/16" x 1 1/2"	Aluminum	TAM-3 45°
300 a 400	5/16" x 1 1/2"	Aluminum	TAM-4 45°

Tinned Brass or Aluminum Terminal with Clamping Cable Gland of 45°, of one hole, for copper or aluminum conductors according to model. It is possible to connect several cable sections with only one terminal.

BRONZE OR ALUMINUM TERMINAL WITH CLAMPING CABLE GLAND - 90°

TBM / TAM 90°



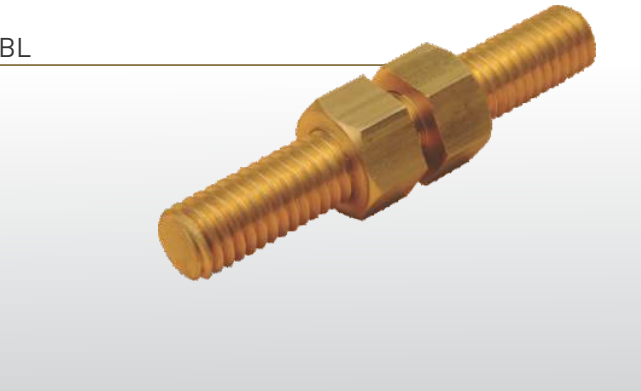
Note: Not recommended to be subjected to vibrations or high levels of traction.

SECTION mm ²	BOLT	MATERIAL	CODE
16 a 50	1/4" x 1"	Brass	TBM-1 90°
70 a 120	1/4" x 1 1/4"	Brass	TBM-2 90°
120 a 240	5/16" x 1 1/2"	Brass	TBM-3 90°
300 a 400	5/16" x 1 1/2"	Brass	TBM-4 90°
16 a 50	1/4" x 1"	Aluminum	TAM-1 90°
70 a 120	1/4" x 1 1/4"	Aluminum	TAM-2 90°
120 a 240	5/16" x 1 1/2"	Aluminum	TAM-3 90°
300 a 400	5/16" x 1 1/2"	Aluminum	TAM-4 90°

Brass or Aluminum Terminal with Clamping Cable Gland of 90°, of one hole, for copper or aluminum conductors according to model. It is possible to connect several cable sections with only one terminal.

BRONZE BLOCK - SET OF FASTENING

BL



THREAD	LENGHT	CODE
5/16"	32	BL 01-32
5/16"	38	BL 01-38
5/16"	43	BL 01-43
3/8"	38	BL 02-38
3/8"	43	BL 02-43
3/8"	50	BL 02-50
1/2"	43	BL 03-43
1/2"	50	BL 03-50
1/2"	60	BL 03-60
1/2"	75	BL 03-75
1/2"	89	BL 03-89

'TESTA' DIVISIBLE TUBES FOR MAIN
DOWNSTREAM PIPE

PDT



FOR PIPE	CODE
1"	PDT-1
1 1/4"	PDT-2
1 1/2"	PDT-3

Product designed to simplify and expedite the exchange of tubes in various kinds of pipe diameters of pillar pipe. The divisible system allows its assemblance without having to interrupt the service, a main and essential characteristic when performing an exchange or a brand new assemblance.

Features:

- Adjustable system to pipes of 1" , 1 1/4" , 1 1/2" .
- Complete tightness.
- Manufactured of black polypropylene with UV material added.
- Long lasting lifetime.
- Pipe clamp system which allows its assemblance no matter the condition of the pillar pipe thread.

Thanks to all the above features 'Testa' tube has become a practical and safe product for any technician.